

A&K-Station PC Editor and Librarian

Table of contents

Welcome! 3

Disclaimer 3

Introduction 4

Installation..... 4

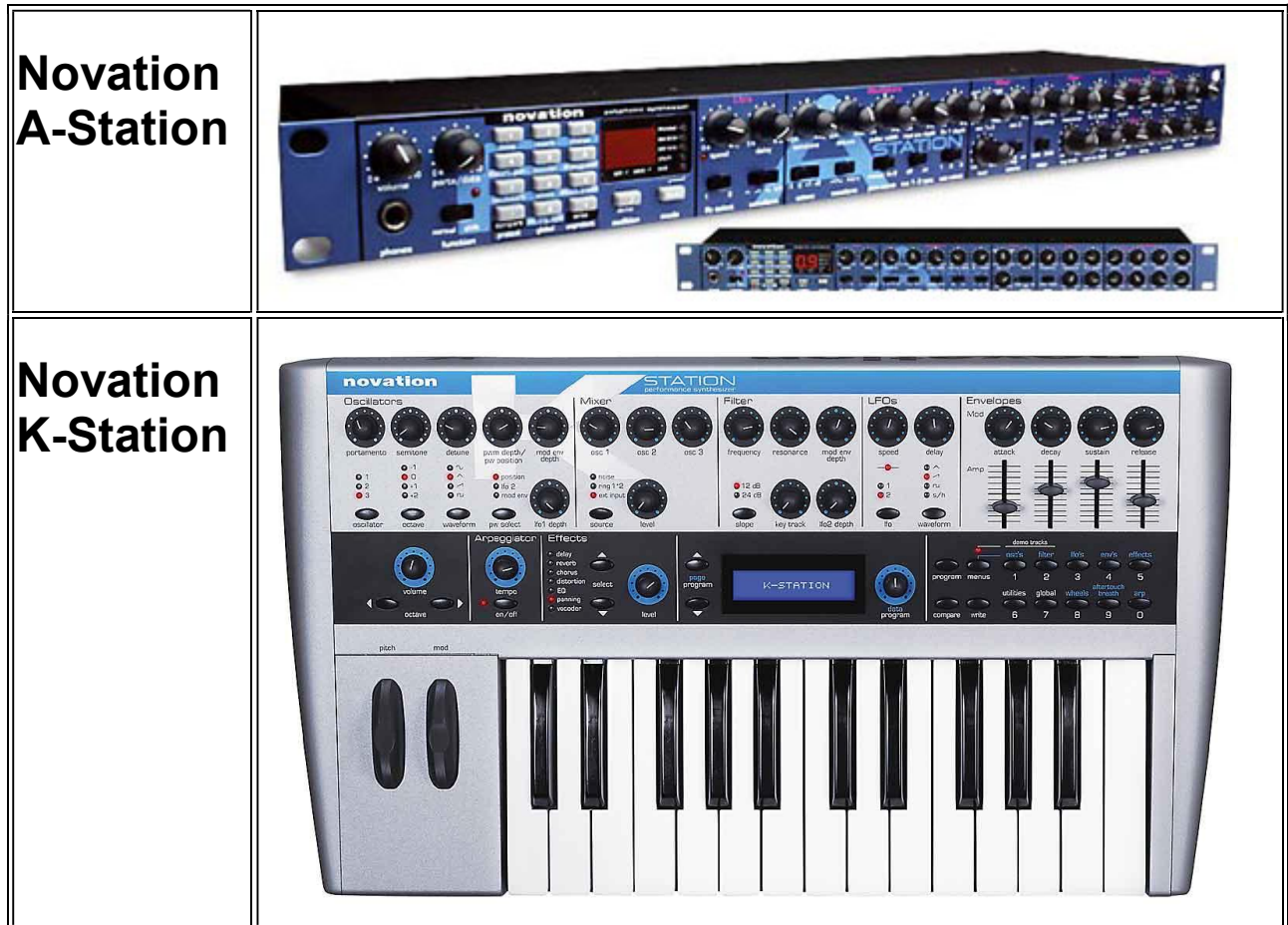
Getting Started 5

System Requirements 11

History..... 11

Welcome!

Welcome to the **A & K Station PC Editor/Librarian**! If you have one of the following gears you'll enjoy a lot this software tool.



The A&K-Station PC Editor/Librarian is a software tool that allows you to easily interact with your **Novation A or K-Station (C)** in a very comfortable way. All the parameters of your device are accessible with very few mouse clicks, so that you don't have to navigate through deep menus or forms hierarchies to gain access to a specific **Novation A or K-Station (C)** parameter.

Main Features

- **Edit** virtually any parameter of the Novation A or K-Station;
- **Save** the patches (all or one at a time);
- **Load** the patches (all or one at a time);
- **Sort** the patches;
- **Transfer** patches from the PC to the Novation A or K-Station device.

Disclaimer

THE **A & K-Station PC EDITOR/LIBRARIAN SOFTWARE** IS PROVIDED "AS IS". YOU

AGREE THAT BY ACCEPTING THIS LICENSE, YOU ARE EXPRESSLY ACKNOWLEDGING THAT THE USE OF THIS SOFTWARE IS **AT YOUR OWN RISK**. ANY DAMAGE OR HARM TO YOUR SYSTEM (EITHER THE PC OR THE CONNECTED MUSICAL DEVICES) BY RUNNING THIS SOFTWARE WILL ALSO BE FOR YOUR OWN RISK.

Introduction

The **A & K Station PC Editor/Librarian** aim is to dramatically simplify your interaction with the Novation A-Station and K-Station devices. A unique form contains all the device and programs parameters that can be then immediately accessed.

The **A & K Station PC Editor/Librarian** can hold, like the Novation devices, 400 programs (sounds, patches, ...) into the PC memory and an additional Edit Buffer which is the only memory location on which you can operate. Keep in mind that the PC Editor can store also program names and categories (E.g. Bass, Pad, Lead Hard, Brass, ...), which are unavailable on the Novation musical instrument side.

The **A & K Station PC Editor/Librarian** programs memory is NOT the same as the Novation a & K Station devices one, so you'll have to copy and transfer them in both directions to edit and store programs in the desired locations. For example, if you want to modify using the PC Editor a program stored into the Novation A or K-Station you have to perform these simple operations:

- 1) Copy the desired program from the Novation MIDI device to the PC Editor memory (by pressing the "**Get Curr Sound**" or the "**Get Program nr**" Buttons).
- 2) Modify the desired parameter from the PC Editor form;
- 3) Copy back the desired program from the PC Editor into the Novation A or K-Station (by pressing the "**Set Curr Sound**" or the "**Set Program nr**" Buttons).

N.B.: THE NOVATION A OR K STATION DEVICE ARE NOT ABLE TO STORE PROGRAM NAMES AND CATEGORIES, SO THAT DURING THE TRANSFER THEY WILL BE LOST. NAMES AND CATEGORIES ARE USEFUL ON THE PC SIDE WHEN USING THE PROGRAM AS A LIBRARIAN.

Installation

To use the software you have to install it. Run the AKStationSetup.exe program that can be downloaded from <http://www.luigibianchi.com/AKStation/AKStation.htm> and follow the instructions. You need to have installed at least Windows XP SP3 and a screen resolution of at least 1024 * 768 pixels.

Once installed the software you can run the program to test its features in DEMO mode. This special DEMO mode allows you to use the software with limited features. Once launched, the following form will be displayed:

Demo Mode

This program is running in DEMO mode, with limited functionalities.
 Compared to the full version the DEMO mode cannot do:

- 1) Invoke the "Save All" programs command;
- 2) Invoke the "Load All" programs command;
- 3) Edit some parameters relative to Oscillator 2 and Oscillator 3;
- 4) Edit filter resonance;
- 5) Edit Effect Send Levels.

A full license costs 29.95 euros, that can be purchased via PayPal. Press the "Send an email to request a full license" button to buy one.

No money will be asked to you until you get the license!
 Don't forget to put your name in the text box!

Full name of the licensed user:

PC Editor/Librarian Flavour
☐ A-Station ☒ K-Station

Send an email to request a full license

Continue in DEMO mode

PayPal

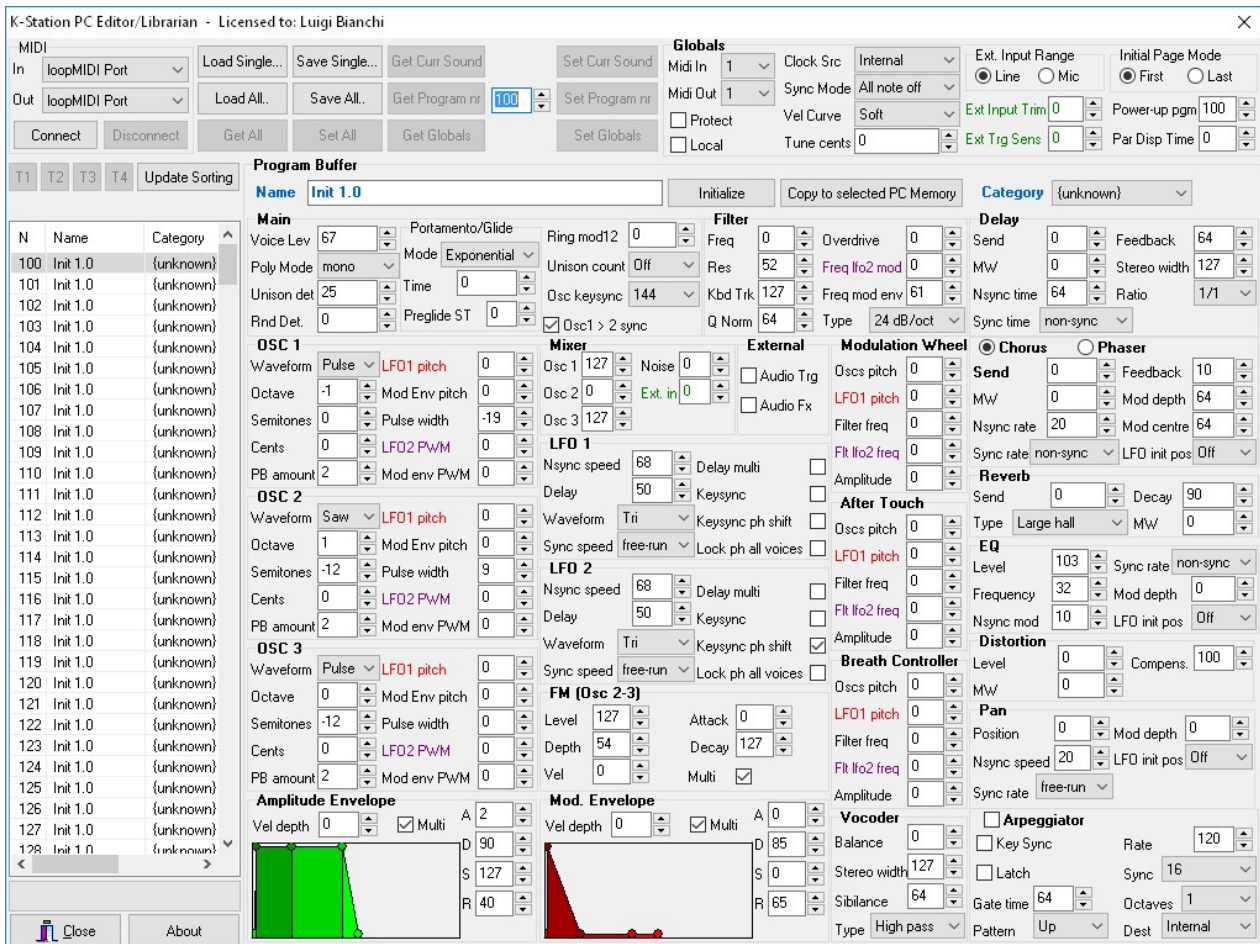
You have to select the program flavour, that is you have to choose between "A-Station" or "K-Station", according to the device you want to connect. This have to been done even if DEMO mode, otherwise the messages from the PC to the **Novation** device and vice versa will be lost. If you want to run the program in DEMO mode you have to press the "Continue in DEMO mode" button, otherwise if you want to purchase a license you have to fill the edit box with the name of the licensed user and then press the **"Send an email to request a full license"** button. Within 24 hours you'll receive instructions regarding the way to obtain a full license code. PayPal will be used to charge your purchase.

Getting Started

You need to connect a PC running Microsoft Windows through a MIDI interface with the MIDI In and Out of your musical instrument.

You are now ready to use the A&K-Station PC Editor/Librarian. You can run it from either the Start Menu or from an Icon from the Desktop (if you selected to have this option during the installation procedure).

Once you have launched it and eventually processed the Demo Mode Form, the following will appear:

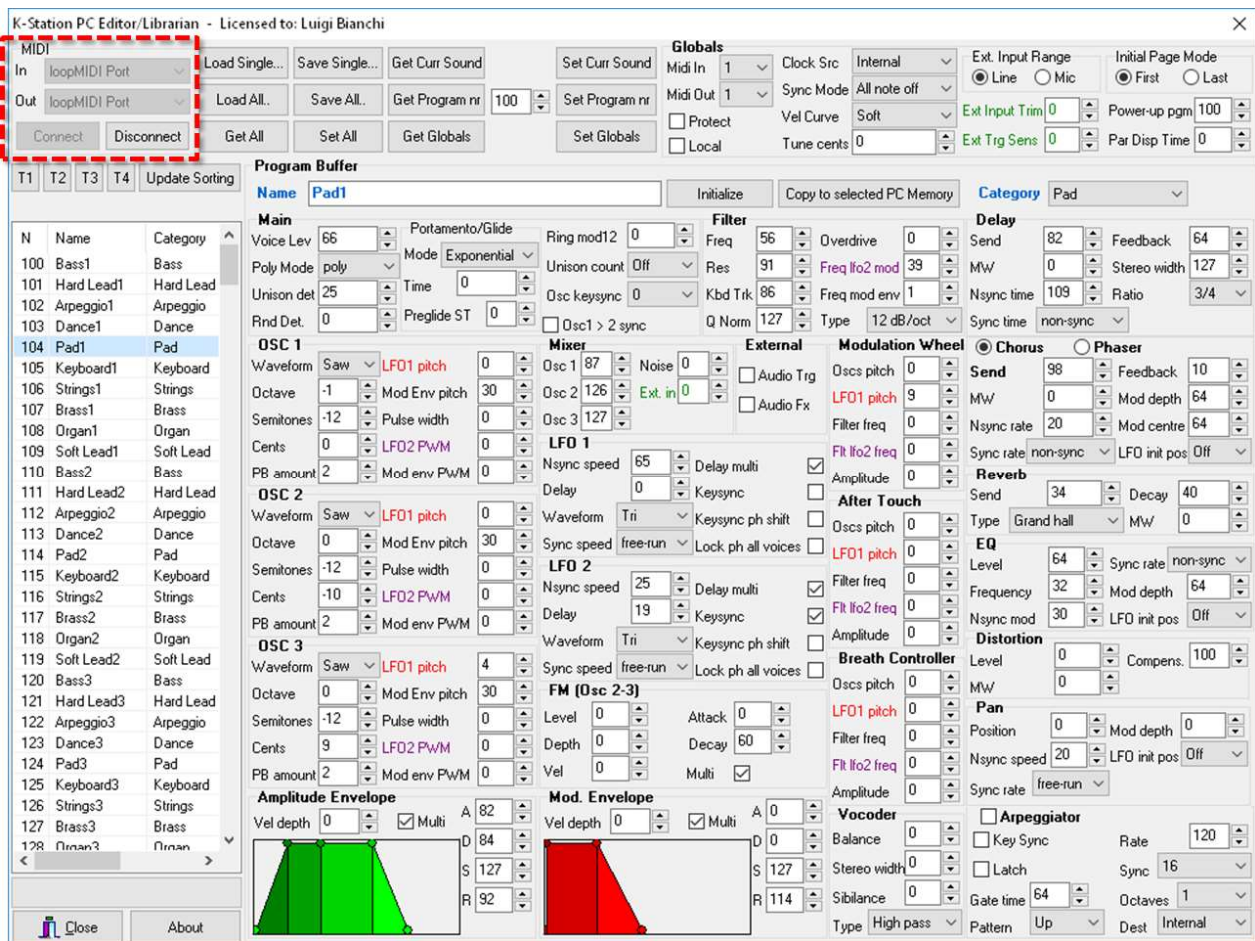


It is organised into 5 main regions:

- 1) The MIDI settings
- 2) The Programs Load/Save/Transfer buttons group
- 3) The Global settings
- 4) The Programs list
- 5) The Program parameters

The MIDI settings.

Before performing any operation you should connect the PC with the Novation device through a MIDI connection. You should select the MIDI in and out ports and press the **Connect** button. After a successful connection all the buttons of the Programs Load/Save/Transfer group will be activated, unless you are running the program in restricted DEMO MODE: in this case some buttons will not be activated and some functions will be unavailable until you obtain a full license.



The Programs Load/Save/Transfer buttons group

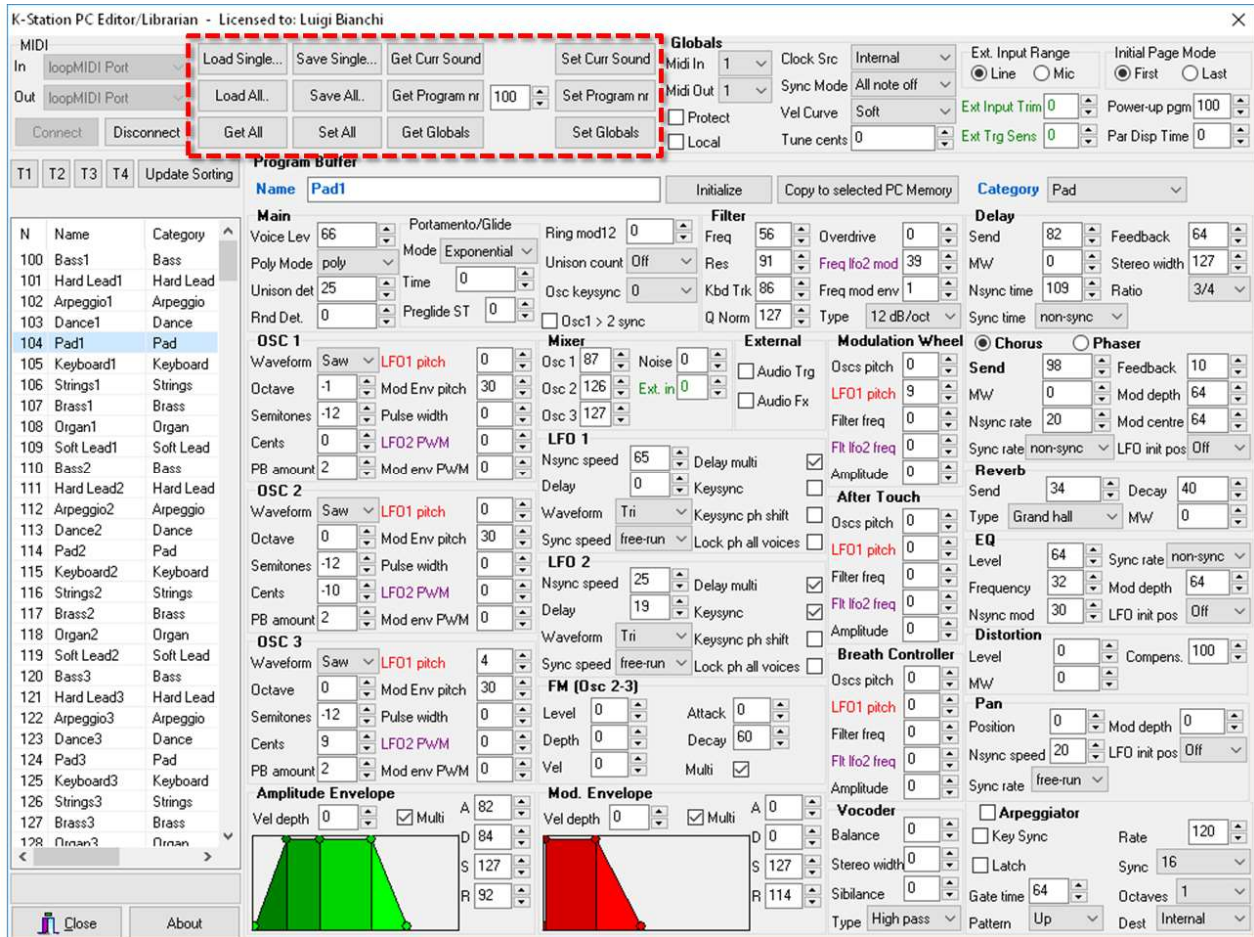
There are 12 buttons in this group:

- 1) **Load Single...:** allows to read a single program from a System Exclusive file (*.syx) or from a Native A-Station PC Editor file (*.nas). The main difference among the two file formats is that *.nas files can hold a program name and a category name, which is missing in *.syx files.
- 2) **Load All...:** allows to read 400 patches and globals.
- 3) **Get All:** allows to copy all the programs from the Novation Device to the A & K-Station PC Editor/Librarian.
- 4) **Save Single...:** allows to store the PC Editor currently selected program into a *.nas file.
- 5) **Save All...:** allows to save all the PC Editor programs in a external file.
- 6) **Set All:** allows to copy all the 400 PC Editor programs into the Novation Device. All the Novation Device programs will be overwritten.
- 7) **Get Curr Sound:** allows to copy the actually selected program on the Novation MIDI device into the PC Editor Edit buffer.
- 8) **Get Program nr:** allows to copy the Novation MIDI device program, whose number is selected on the PC Editor, into the PC Editor Edit buffer and into the corresponding PC Editor memory location.
- 9) **Get Globals:** allows to copy Globals parameters from the Novation device into the PC Editor memory.
- 10) **Set Curr Sound:** allows to copy the program defined in the Program Buffer group into the Novation device.

11) **Set Program nr:** allows to copy the PC Editor program, whose number is selected on the PC Editor, into the Novation device.

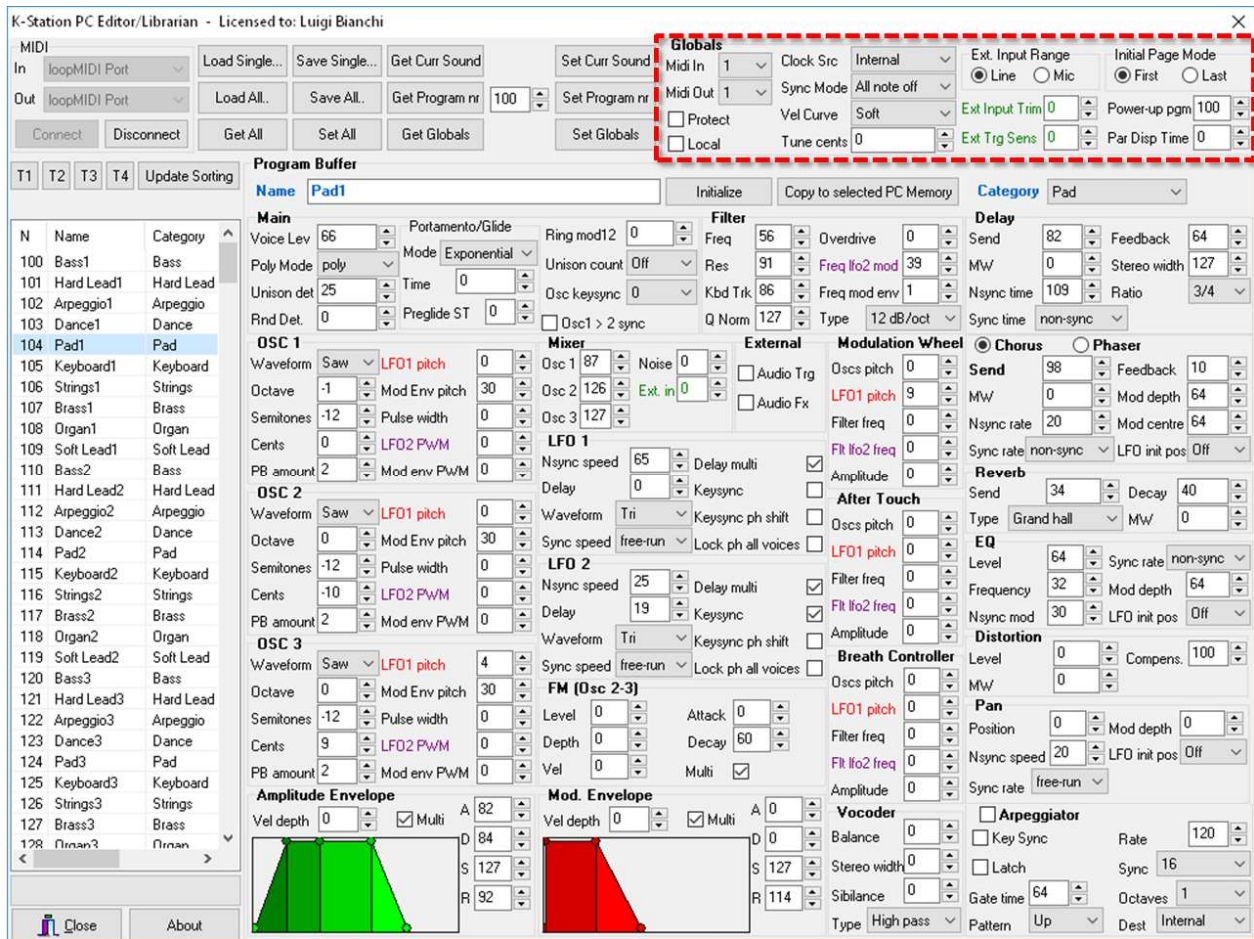
12) **Set Globals:** allows to copy all the Globals parameters from the PC Editor into the Novation A or K-Station MIDI device.

N.B.: THE NOVATION A OR K STATION DEVICE ARE NOT ABLE TO STORE PROGRAM NAMES AND CATEGORIES, SO THAT DURING THE TRANSFER THEY WILL BE LOST. NAMES AND CATEGORIES ARE USEFUL ON THE PC SIDE WHEN USING THE PROGRAM AS A LIBRARIAN.



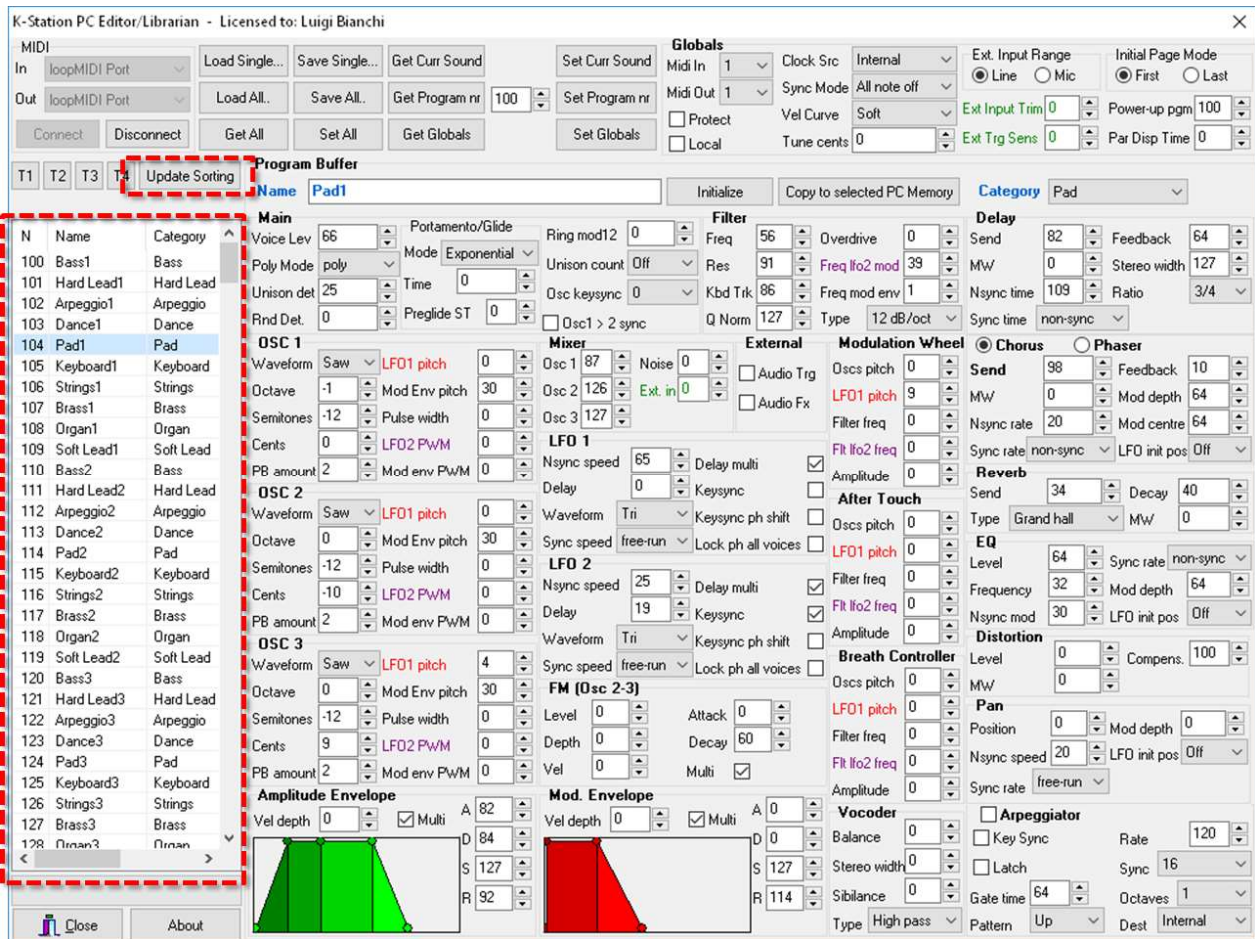
The Global settings

This group contains all the parameters related to the whole machine: all the 400 programs are affected by these parameters.



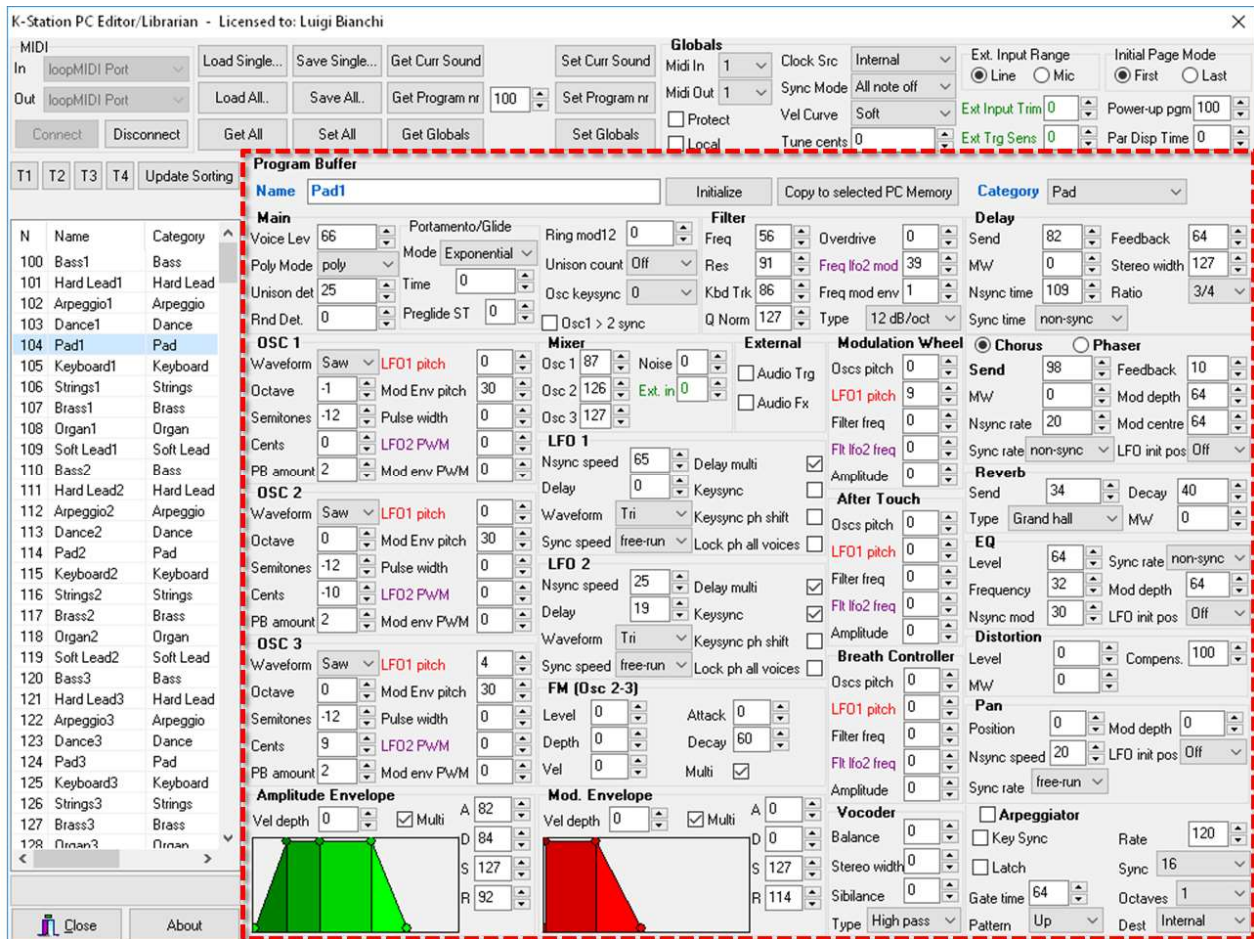
The Programs list

The 400 Programs are listed here. If a name is available it is listed here. From this list you can rearrange the programs (on the PC side) by means of Drag-n-Drop or by clicking on the column headers. To make effective the new sorting on the PC side you have to press the **"Update Sorting"** button, and then, if you want to copy the new programs LFO arrangement on the Novation Device you have to press the **"Set All"** button.



The Program parameters

All of the program parameters are available from this group. In addition to the parameters that can be stored into a Novation Device there are the name and the category of the program. You can use them to easily retrieve them from an external file. However, when you transfer a program from or to a Novation Device names and categories will be ignored and then lost.



System Requirements

Operating System: Microsoft Windows 7, Microsoft Windows 8, Microsoft Windows 10.

PC Screen Resolution: at least 1024 * 768 pixels.

Midi Interface: any

MIDI Device: Novation A-Station or Novation K-Station

History

24/03/2017: Initial release.